

ΑΣΑ • ΑΣΤ • ΦΜ

PANHELLENIC RECRUITMENT GUIDE 2024

FOR POTENTIAL MEMBERS



PANHELLENIC

welcome



Entering college is such an exciting time and we are thrilled you have interest in a values/service based organization. Should you choose to accept a bid, you will become part of the college's strongest sisterhoods that values service, community involvement, excellence, leadership and scholarship.

The Panhellenic Council prepares for fall recruitment months in advance to best serve you as a potential new member. If you have any questions please contact the Panhellenic Council at uwaconnect@uwa.edu or visit the Office of Student Involvement and Communications in Brock Hall 201.

Get excited for a fun filled recruitment year. In this booklet you will find the schedule, outfit recommendations, and FAQs. We look forward to meeting each of you and making so many memories that will last.

let's get social

@UWAPanhellenic
@AlphaSigUWA
@AST.UWA
@PhiMu_UWA



NATIONAL PANHELLENIC CONFERENCE

The National Panhellenic Conference (NPC) is the umbrella group for 26 national and international sororities that are autonomous, women's-only social organizations. As such, NPC is one of the largest organizations advocating for women. NPC sororities are located on nearly 670 campuses with more than 375,000 undergraduate members in more than 3,350 collegiate chapters. Alumnae are represented in nearly 3,500 associations throughout the world.

The National Panhellenic Conference (NPC) is committed to relationships built on trust through transparency, accountability and mutual respect. Innovation and our core values of friendship, leadership, service, knowledge, integrity and community guide us in fulfilling our mission.

Read more about the National Panhellenic Council at www.npcwomen.org

PANHELLENIC CREED

WE, AS UNDERGRADUATE MEMBERS OF WOMEN'S FRATERNITIES,

stand for good scholarship, for guarding of good health, for maintenance of fine standards, and for serving, to the best of our ability, our college community. Cooperation for furthering fraternity life, in harmony with its best possibilities, is the ideal that shall guide our fraternity activities.

WE, AS FRATERNITY WOMEN,

stand for service through the development of character inspired by the close contact and deep friendship of individual fraternity and Panhellenic life. The opportunity for wide and wise human service, through mutual respect and helpfulness, is the tenet by which we strive to live.

A ALPHA
B BETA
Γ GAMMA
Δ DELTA
E EPSILON
Ζ ZETA
Η ETA
Θ THETA
Ι ΙΟΤΑ
Κ ΚΑΡΡΑ
Λ ΛΑΜΒΔΑ
Μ ΜΥ
Ν ΝΥ
Ξ ΞΙ
Ο ΟΜΙΚΡΟΝ
Π ΠΙ
Ρ ΡΗΟ
Σ ΣΙΓΜΑ
Τ ΤΑΥ
Υ ΥΠΣΙΛΟΝ
Φ ΦΙ
Χ ΧΙ
Ψ ΨΙ
Ω ΟΜΕΓΑ

GREEK LETTERS AND TERMINOLOGY

ACTIVE: A fully initiated member of a sorority who is currently participating as a member

ALUMNA: Sorority member who is no longer an active member of a collegiate chapter

ALUMNAE: Sorority members who are no longer active members of a collegiate chapter

BADGE: The sorority membership insignia

BID: An invitation to join a sorority

BIG SISTER: Active member assigned to be the personal mentor for a new member

CHAPTER: A membership unit of a national or international sorority or fraternity

CHARTER: Documentation that an individual chapter is recognized and operates according to the national organization

CONTINUOUS OPEN BIDDING (COB): Process of extending bids on an individual basis that begins immediately following the formal recruitment program

FORMAL SORORITY RECRUITMENT: A membership recruitment period during which a series of organized rounds are held by each National Panhellenic Conference sorority, organized and implemented by the Panhellenic Council.

INITIATION: A traditional ritual that brings a new member into full membership of the sorority

LEGACY: Someone whose family member was an affiliate of a particular Greek-letter organization; each organization determines legacies differently, but may include mother, sister, aunt, or grandmother

NATIONAL PANHELLENIC CONFERENCE (NPC):

Conference composed of 26 national women's fraternities; each is autonomous as a general, Greek-letter society of college women, undergraduates, and alumnae

NEW MEMBER: A woman who has accepted a sorority bid, but is not yet an initiated member. (may also be called provisional member)

NEW MEMBER CLASS: A chapter's group of new members after the recruitment process is complete. (may also be called pledge class)

NEW MEMBER EDUCATOR: A liaison between the new member class and the chapter who is responsible for implementing and monitoring the new member program and preparing the new members for initiation

PANHELLENIC COUNCIL: A council made up of officers and one delegate from each of the NPC chapters

PHILANTHROPY: Fundraisers, projects, events, or donations to raise money for nationally sponsored charitable organizations

POTENTIAL NEW MEMBER (PNM): A student who is not yet affiliated with a chapter and is interested in becoming a part of the fraternity and sorority community

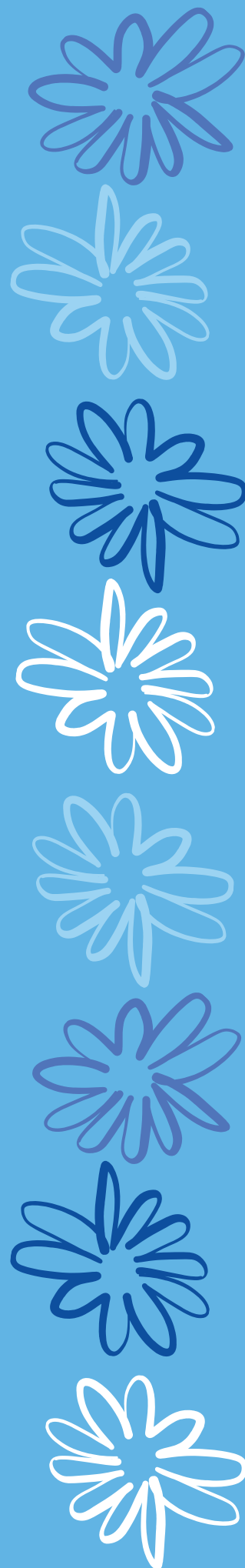
RECOMMENDATION/ REFERENCE: A letter written by an alumna member recommending a potential new member to a sorority; recommendations are generally not required.

RECRUITMENT: Membership process.

RITUAL: The ceremonies that bring together the beliefs and standards of a fraternal organization

SORORITY: A Greek-letter sisterhood (may also be called a fraternity)

STUDENT INVOLVEMENT OFFICE: A department of The University of West Alabama that advises Greek Life and other clubs/ organizations on campus. Found in Brock 201.



DATES TO KNOW ↓

PRE RECRUITMENT EVENTS -

MEET THE GREEKS COOKOUT | AUGUST 27

GET ON BOARD DAY | AUGUST 29

RECRUITMENT ORIENTATION | SEPTEMBER 3

SISTERHOOD OPEN HOUSE | SEPTEMBER 3

FORMAL RECRUITMENT EVENTS-

CHAPTER EVENTS | SEPTEMBER 4-11

INVITATIONAL ROUND | SEPTEMBER 12

BID DAY | SEPTEMBER 13

*ALL DATES ARE SUBJECT TO CHANGE



SIGN UP FOR PANHELLENIC
RECRUITMENT ↓

UWA.EDU / CAMPUS-LIFE / CLUBS-
ORGANIZATIONS / FRATERNITIES-
SORORITIES /

FRATERNITIES + SORORITIES @ UWA

NATIONAL PANHELLENIC CONFERENCE (NPC)

ALPHA SIGMA ALPHA

ALPHA SIGMA TAU

PHI MU

INTERFRATERNITY COUNCIL (IFC)

DELTA CHI

SIGMA PI

NATIONAL PAN-HELLENIC COUNCIL (NPHC)

ALPHA KAPPA ALPHA SORORITY, INC.

DELTA SIGMA THETA SORORITY, INC.

SIGMA GAMMA RHO SORORITY, INC.

ZETA PHI BETA SORORITY, INC

ALPHA PHI ALPHA FRATERNITY, INC.

KAPPA ALPHA PSI FRATERNITY, INC.

OMEGA PSI PHI FRATERNITY, INC.

PHI BETA SIGMA FRATERNITY, INC.



LEADERSHIP + INVOLVEMENT

Opportunities for students to become involved in leadership roles are endless during your undergraduate experience. As a chapter officer or coordinator of a chapter event or community service project, you can develop valuable leadership skills. Each chapter has committee structures that allow members to be part of many operational aspects of the sorority. Chapters provide educational programming in areas such as time management, communication, and networking. Sorority women also hold many campus leadership roles. An individual chapter lays a foundation for getting involved in larger leadership roles. Sorority membership automatically gives you the opportunity to become a part of the Panhellenic Council's executive board or delegation. By working with the women in your chapter, you will be exposed to numerous campus-wide organizations. This is evident by the large number of fraternity and sorority members representing the most influential groups on campus. Being a part of the fraternity and sorority community provides the network and resources you need when looking for employment. Sorority alumnae understand the experience of being a team player while maintaining individuality. The desire to excel, both in and out of the classroom, and commitment to the betterment of the community are traits that employers look for and recognize as attributes of fraternity and sorority members. For these reasons, sorority life offers an excellent opportunity for networking. In our changing and competitive world, it is important to establish relationships with people beyond the university. Knowing and interacting with sorority alumnae can help build this crucial bridge to success.

ACADEMICS

Academic success is one of the most important parts of the college experience. While the Panhellenic Council at The University of West Alabama does not require a minimum grade point average to participate in Panhellenic formal recruitment, each individual sorority has a minimum grade point average requirement for membership eligibility. Individual sororities have minimum grade point average requirements that range from a 2.5 to a 3.0 on a 4.0 scale depending on each national organization. Collegiate fraternal organizations were founded on the principle of successful scholarship. The academic performance of each chapter is tabulated every semester to determine overall chapter rankings.

To view Greek Grade Reports visit:
<https://www.uwa.edu/campus-life/clubs-organizations/fraternities-sororities/>

SERVICE + GIVING

In the past year, Panhellenic organizations at The University of West Alabama have collectively raised \$15,355 for their respective philanthropic organizations + donated 2,191 hours of community service! Sorority women's interests and concerns go far beyond the confines of campus life. Sororities sponsor a multitude of activities each year to support the local community and raise money for philanthropies. The opportunities to contribute to your community, both locally and nationally, will be endless. The ability to give oneself is probably one of the most important qualities a woman will develop through sorority life. The Panhellenic Council at The University of West Alabama looks forward to having you get involved!

SOCIAL ACTIVITIES

Social activities can vary largely from chapter to chapter, but they are great opportunities for a sorority to develop sisterhood and friendships. Chapters work year-round to plan events with other organizations on campus to strengthen the bonds between their members. Panhellenic takes an active interest in building well-rounded women. Chapters plan many events for members only. Sisterhood retreats, closed weekends, member sleepovers in the house, and date parties are all examples of events on a sorority's social calendar. Each year, chapters host special formal and semi-formal events for their members. Parents' weekend and family events are also planned to provide the opportunity for loved ones to visit and experience sorority involvement.

Through the planned and spontaneous events that come along with a sorority experience, women find lifelong friends. Sisters are often found spending time in the chapter hall and getting ready for events together, and many times, end up living together during and after college. Being part of a sisterhood at The University of West Alabama means discovering a home away from home and making a large campus seem a great deal smaller. Opportunities to make memories and friendships that will last a lifetime are great reasons to join a Panhellenic organization.

FINANCIAL OBLIGATION

It is important to understand and be informed of the financial costs of joining a sorority. Each sorority has different financial obligations associated with membership in its chapter. It is important to recognize that semester dues for some chapters are all-encompassing while others may not be. The most important thing to keep in mind regarding dues is that it is an investment. The return on the investment of being a member of the Panhellenic community is invaluable. With all the opportunities provided by sorority membership, it is well worth every penny. Please visit each Chapter's page to see their financial obligations.

RETURN ON INVESTMENT

Sisterhood is the foundation of all aspects of sorority life. The variety of activities, philanthropies, initiatives, and socials are a spectacular experience because you share them with your sisters. Membership provides you with an opportunity for personal growth and individual achievement within a sisterhood of support. Your accomplishments are shared and your goals are encouraged. The spirit of the unspoken bond between sisters is unlike any other relationship. You have a chapter of women uplifting you, pushing you to attain your dreams. Joining a sorority is the beginning of a new experience with new friends and a home away from home. Although each chapter's new-member program begins immediately following recruitment, each program extends for a different length of time. Some may continue throughout the entire semester, while some may be completed in four to eight weeks following bid acceptance. During the first semester of your association, all the activities are designed to orient you with your sorority's history and goals, while working toward initiation. Activities such as retreats, service projects, meetings, study hours, and philanthropy participation will help you build a strong foundation for sorority life. One of the most enjoyable parts of joining a sorority involves making new friends and forming bonds that will last long after college. You will develop a connection with your sisters through sharing their experiences and interests. As friends, they will share your success, excitement, troubles, and happiness. As sisters, they will become a family to you, embracing both your weaknesses and your strengths and standing beside you. Sisterhood means unconditional friendship that comes from being respected for your individuality. It is being loved for who you are. Sisterhood is the making of friendships that will last a lifetime, and it will help you through both good and bad times. It is having women there to support you through your college and life transitions. Whether it is your "big sister," your roommates, or your new-member class sisters, you will find many women you can count on to be there during one of the most important times in your life.

FORMAL RECRUITMENT + WHAT TO WEAR

RECRUITMENT ORIENTATION + SISTERHOOD OPEN HOUSE

Meet other women going through the process and ask questions to our Panhellenic Council. If you're on the fence about going through recruitment, this is a great time to come see what Panhellenic Sorority life is about. Following the orientation, everyone will walk over to an open house sisterhood event. You will have the opportunity to meet the active members to do a sisterhood activity sponsored by UWA Panhellenic! During the sisterhood open house event you have the flexibility within a one hour window to spend however much time you desire with each group to get to see what everyday sisterhood is like in a UWA Panhellenic sorority!

You do NOT have to be signed up for recruitment to attend these events!

WHAT TO WEAR: WE RECOMMEND WEARING A TSHIRT, CASUAL TOP/ TANK TOP WITH BLUE JEAN SHORTS, ATHLETIC SHORTS, SANDALS, TENNIS SHOES - THESE EVENTS ARE VERY CASUAL

CHAPTER EVENTS

With 60 minutes with each sorority, you will get the opportunity to to understand what it means to be a sister of each chapter. You might see a video or presentation about their sisterhood or philanthropy. This is an ideal time to ask about sisters personal experiences, their sisterhood, their philanthropic involvement and community service activities. You must attend 1 chapter event per sorority to be eligible for invitational round (this does not include attending a chapter during Sisterhood Open House). You are encouraged to attend all chapter events that you can.

WHAT TO WEAR: WE RECOMMEND YOU WEAR NICE JEANS OR SKIRT WITH APPROPRIATE TOP, A NICE ROMPER OR DRESS. FOR SHOES, WEAR COMFORTABLE WEDGES OR SANDALS.

INVITATIONAL ALSO KNOWN AS "PREF" OR "PREFERENCE"

Before the rounds begin, you will pick up your preference cards at the Brock 201 between 11:00am- 1:00pm. Your cards will tell you what time your rounds begin that afternoon. The hour-long event at each chapter may include personal testimonies from sisters, or you may be invited to participate in a chapter ceremony. This round allows you to get even closer to women you have met in each chapter. This is the time to start thinking about which chapter you feel most comfortable in and where you can see yourself for life.

WHAT TO WEAR: THIS IS THE DRESSIEST ROUND OF RECRUITMENT. WE RECOMMEND WEARING "SUNDAY" DRESS WITH HEELS, WEDGES, OR FLATS.

FORMAL RECRUITMENT + WHAT TO WEAR

BID DAY!

This day you will receive your bid to your sorority. You will meet the Panhellenic Council at Bridges Auditorium and open your bid cards. You will then run (or walk) home to your new sisters! Family and friends are welcomed and encouraged to attend.

WHAT TO WEAR: ON THIS DAY, WE RECOMMEND WEARING A COMFY PAIR OF SHORTS/ SKORT AND COMFY SHOES SO YOU CAN RUN HOME. SHIRTS WILL BE PROVIDED BY SORORITIES.

RECRUITMENT SOCIAL + SISTERHOOD OPEN HOUSE



CHAPTER EVENTS



PREFERENCE



BID DAY



HOW DOES RECRUITMENT WORK?

UWA FOLLOWS THE PARTIALLY STRUCTURED RECRUITMENT MODEL

PRIMARY RECRUITMENT HAPPENS ONCE PER SCHOOL YEAR AND MIGHT BE THE BUSIEST SEASON FOR SORORITY WOMEN AND POTENTIAL NEW MEMBERS (PNMS). RECRUITMENT ON UWA'S CAMPUS HAPPENS FOR A LITTLE OVER A WEEK. PRIMARY RECRUITMENT GIVES PARTICIPANTS THE OPPORTUNITY TO MEET THE PANHELLENIC SORORITY COMMUNITY ON CAMPUS.

BEING A PARTIALLY STRUCTURED CAMPUS MEANS THAT PNM'S HAVE THE OPTION TO ATTEND AS MANY CHAPTER EVENTS AS THEY WOULD LIKE, BUT ONLY HAVE TO ATTEND (1) CHAPTER EVENT OF EACH SORORITY'S TO BE ELIGIBLE FOR PREFERENCE ROUND. THIS IS DONE SO PNM'S CAN CHOOSE EVENTS THAT FIT AROUND THEIR SCHEDULE!

THE RECRUITMENT PROCESS

REGISTER! (UWA.EDU/CAMPUS-LIFE/CLUBS-ORGANIZATIONS/FRATERNITIES-SORORITIES/)

WHEN YOU MAKE THE DECISION THAT GOING THROUGH RECRUITMENT IS RIGHT FOR YOU, YOU HAVE TO SIGN UP. REGISTRATION MAY INCLUDE PROVIDING INFORMATION ABOUT YOUR GPA, INVOLVEMENT IN ACTIVITIES AND PROVIDING INFORMATION ABOUT ANY FAMILY MEMBERS WHO HAVE ALSO BEEN A SORORITY MEMBER. THERE IS ALSO A SMALL FEE WITH REGISTERING FOR PANHELLENIC RECRUITMENT.

ATTEND PRE-RECRUITMENT GREEK EVENTS!

AT UWA THERE ARE SEVERAL EVENTS PRE-RECRUITMENT TO HELP YOU UNDERSTAND WHAT GREEK LIFE LOOKS LIKE AT UWA THAT ARE FOR POTENTIAL MEMBERS. BE SURE TO CHECK OUT @UWACONNECT AND @UWAPANHELLENIC ON INSTAGRAM TO KEEP UP WITH THE VARIOUS EVENTS THAT WILL BE HELD.

ATTEND PANHELLENIC CHAPTER EVENTS

NOW THE FUN PART; YOU WILL GO TO EVERY SORORITY ON CAMPUS. KEEP AN OPEN MIND AS YOU MEET CHAPTER MEMBERS RATHER THAN RELYING ON PRECONCEIVED NOTIONS OR SECONDHAND INFORMATION. TO BE ELIGIBLE FOR PREFERENCE (INVITATIONAL) ROUND, YOU MUST ATTEND (1) CHAPTER EVENT PER SORORITY, HOWEVER, YOU ARE ALLOWED TO ATTEND AS MANY CHAPTER EVENTS AS YOU WOULD LIKE.

ASK QUESTIONS

AT EVERY SORORITY, YOU WILL GET TO TALK TO MULTIPLE WOMEN IN THAT CHAPTER. AS THE WOMEN GET TO KNOW YOU THEY WILL PROBABLY ASK ABOUT YOUR MAJOR, PASSIONS, WHERE YOU'RE FROM. THE OVERLOOKED PART IS THAT YOU ARE ALSO GETTING TO KNOW THE CHAPTER MEMBERS. YOU CAN ASK THEM THE SAME QUESTIONS. IN FACT, IT IS ENCOURAGED. WHAT SORORITY YOU JOIN IS UP TO YOU, SO TAKE THIS VALUABLE TIME TO GET TO KNOW THE WOMEN.

EVALUATE CHAPTERS

BASED ON THE ANSWERS TO THE QUESTIONS YOU ASK AND THINGS YOU EXPERIENCE DURING CHAPTER EVENTS, YOU WILL NEED TO EVALUATE THE CHAPTERS. BEFORE PREFERENCE (INVITATIONAL) ROUND, YOU WILL BE ASKED TO RANK THE CHAPTERS 1-3 WHICH WILL BE CALLED YOUR "LIST." THIS LIST ALONG WITH THE LIST THE CHAPTERS SEND IN, WILL DETERMINE WHICH PREFERENCE (INVITATIONAL) ROUND INVITES YOU RECEIVE. AS YOU ARE MAKING DECISIONS, SO ARE THE SORORITIES. THIS MUTUAL SELECTION PROCESS MAY MEAN NOT GOING BACK TO A CHAPTER YOU PRIORITIZED HIGHLY. YOU MAY RECEIVE AN INVITATION TO A CHAPTER YOU HAVE INDICATED AS A LOW PRIORITY. CONSIDER THIS AN OPPORTUNITY FOR YOU TO GET TO KNOW THE CHAPTER FURTHER AS THEY HAVE IDENTIFIED YOU AS SOMEONE WHO FITS THE VALUES AND EXPECTATIONS OF THEIR ORGANIZATION.

PREFERENCE ROUND (INVITATIONAL ROUND) + MRABA SIGNING

YOU WILL ONLY BE INVITED BACK UP TO TWO SORORITIES FOR PREFERENCE ROUND. PREFERENCE ROUND IS THE MOST IMPORTANT ROUND OF RECRUITMENT. THIS IS WHEN YOU WILL NEED TO MAKE YOUR FINAL DECISIONS ABOUT WHERE YOU THINK YOUR "HOME" IS WITHIN THE PANHELLENIC SORORITIES. IF YOU GET INVITED BACK TO A PREFERENCE EVENT, THIS MEANS THAT THOSE CHAPTERS SEE YOU AS A GOOD FIT FOR THEIR SORORITY.

THERE IS ONE MORE IMPORTANT THING YOU WILL DO BEFORE LEAVING RECRUITMENT. YOU WILL FILL OUT WHAT IS CALLED THE MEMBERSHIP RECRUITMENT ACCEPTANCE BINDING AGREEMENT, OR MRABA. ONCE YOU SUBMIT THIS AGREEMENT, YOU ARE AGREEING TO ACCEPT A BID FROM ANY SORORITY YOU HAVE CHOSEN TO LIST ON YOUR FORM. IF YOU RECEIVE A BID AND THEN DECIDE YOU DON'T WANT TO BE A MEMBER, YOU ARE NOT ABLE TO RECEIVE A BID FROM ANOTHER ORGANIZATION ON THAT CAMPUS UNTIL THE NEXT PRIMARY RECRUITMENT PERIOD. TRADITIONALLY THAT IS ONE YEAR FROM WHEN YOU SIGN THE FORM.

BID DAY

THE FINAL STEP TO RECRUITMENT IS BID DAY! THIS IS WHERE EVERYONE DRESSES UP, CHEERS AND GETS SO EXCITED TO BRING HOME NEW MEMBERS THEY'VE TALKED TO ALL OF RECRUITMENT. THERE ARE A FEW THINGS THAT MIGHT HAPPEN ON BID DAY: 1. YOU RECEIVE A BID FROM YOUR TOP CHOICE CHAPTER 2. YOU RECEIVE A BID FROM ONE OF THE CHAPTERS LISTED ON YOUR MRABA 3. YOU DO NOT RECEIVE A BID 4. YOU RECEIVE A PHONE CALL OFFERING A SNAP BID.

IF THERE IS AN OUTCOME THAT YOU WERE NOT EXPECTING, THE BEST THING YOU CAN DO IS KEEP AN OPEN MIND. YOU MAY NOT THINK A CHAPTER IS THE BEST FIT, BUT MAY FIND IT IS YOUR HOME AWAY FROM HOME. IF YOU DO NOT RECEIVE A BID THERE ARE OTHER OPTIONS, LIKE PARTICIPATING IN CONTINUOUS OPEN BIDDING (COB) OR SNAP BIDDING. FAMILY AND FRIENDS ARE INVITED AND ENCOURAGED TO ATTEND BID DAY.



FREQUENTLY ASKED QUESTIONS

DO I NEED TO ATTEND ALL EVENTS LISTED ON THE RECRUITMENT SCHEDULE?

You will need to attend at minimum, one chapter event per sorority. There is not a limit on how many events you can attend. We want you to learn as much as possible about greek life during this recruitment period, so we highly encourage you to attend everything you can.

WHAT SHOULD I BRING WITH ME TO RECRUITMENT?

Bring only the necessities.

WHAT SHOULD I KNOW ABOUT REC/ REFERENCE LETTERS?

Reference letters are not a requirement and will not guarantee a bid.

WHAT ARE OUR VALUES?

As Panhellenic women, we stand for scholarship, service, and sisterhood.

IF I GO THROUGH RECRUITMENT, DO I HAVE TO JOIN A SORORITY?

You are not obligated to join a sorority and may withdraw at any point. This process is a time for you to meet people, evaluate an opportunity, and make a decision that is best for you.

WHAT IF I AM NOT AN INCOMING FRESHMAN?

You can still go through recruitment and have a great experience. Each chapter takes upperclassmen in their new pledge classes.

I AM A LEGACY TO A SORORITY, IS THERE ANYTHING THAT I SHOULD KNOW?

Each sorority views legacy status differently. Some consider only daughters or sisters of alumnae, while some extend it to granddaughters, nieces, and cousins. Every potential new member is evaluated individually. No chapter is obligated to extend membership to a legacy. Likewise, you should not feel pressured to join a certain sorority because of your legacy status.

HOW MUCH IS IT TO PARTICIPATE IN RECRUITMENT?

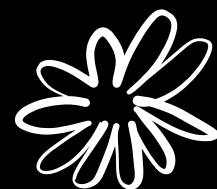
The recruitment fee is \$20.

IS THERE ANYBODY I CAN CONTACT IF I HAVE QUESTIONS FILLING OUT MY RECRUITMENT FORM?

Yes! Please let us know if you have any questions about your registration and we will be happy to assist you. You can contact us through @UWAPanhellenic on Instagram, email UWACConnect@UWA.edu or call 205-652-3549.

QUESTIONS TO ASK DURING RECRUITMENT EVENTS

- What's your academic program like?
- Do you require a certain GPA or study hours?
- Are there scholarships offered through the sorority?
- Does your sorority allow first-year members to hold a leadership position?
- What is the time commitment of the sorority?
- Are there any extra costs besides "dues"?
- What type of events does the sorority hold throughout the year?
- Is the chapter involved during Greek Week and Homecoming?
- What other clubs or organizations are you involved in?
- Why did you join your sorority?
- What are some of the values you associate with your sorority?
- How has your sorority changed you?
- Do you/ have you held a position within the sorority, if so what is it?
- How do you balance your time between school, work and greek life?
- What's your favorite thing to do with your sorority sisters?
- What's your favorite Sorority memory?
- How did you know this sorority was right for you?
- What's the best part of greek life?
- What is your favorite philanthropy event you participated in and why?
- What other philanthropies do you participate in outside of your national philanthropy?
- What philanthropy does your sorority raise money for?
- Does the sorority offer community service opportunities?
- How does the sorority get involved with the community?
- What has been your favorite social event?
- What is formal/ semi formal like?
- What is Big/Little week like?
- How did you meet your Big or Little?
- What type of sisterhood events does your sorority hold?
- What is your favorite sisterhood event?



ALPHA SIGMA ALPHA

ZETA RHO

We are an organization dedicated to developing women of poise and purpose. A Sorority. This is who we are; an organization of sisterhood, heritage, leadership and service. Alpha Sigma Alpha offers an experience of fun campus activities to a lifetime of community impact. By fostering close friendships between members, Alpha Sigma Alpha develops women of poise and purpose who strive to continue improving the world around them. We inspire women to lead, to serve and most of all to make a difference.

In the fall of 1901, at Longwood University, five friends, Virginia Lee Boyd-Noell (Virginia Boyd), Juliette Jefferson Hundley-Gilliam (Juliette Hundley), Calva Hamlet Watson-Wootton (Calva Watson), Louise Burks Cox-Carper (Louise Cox), and Mary Williamson-Hundley (Mary Williamson) decided to rush the local women's fraternities on campus. However, rather than accepting bids that would separate the group, they decided to form their own sorority. On November 15, 1901, Alpha Sigma Alpha was named and chartered. The charter stated "The purpose of the association shall be to cultivate friendship among its members, and in every way to create pure and elevating sentiments, to perform such deeds and to mold such opinions as will tend to elevate and ennoble womanhood in the world."

The primary colors of Alpha Sigma Alpha are crimson and pearl white, supplemented by the secondary colors palm green and gold. Crimson represents loyalty and is a primary color of Alpha Sigma Alpha. Crimson is represented through our jewel, the ruby. Pearl white represents fellowship and a perfect blending of all colors. Pearl white is represented through our second jewel, the pearl. Palm green is a supplementary color, that signifies hope, immortality and victory, and is represented through our symbol the palm. Lastly, gold, another supplementary color, that signifies hope, immortality and victory and is represented through our symbol the crown.

The insignia of Alpha Sigma Alpha are the star, crown, palm tree and phoenix. The star represents the aspirations of Alpha Sigma Alphas to live up to the values of the Sorority. The crown represents leadership attained and the name of recognition given to our alumnae. The palm tree represents an emblem of sturdy development. The phoenix, the central symbol in our coat-of-arms, openly represents the reorganization of the Sorority that occurred in 1914.

The Zeta Rho chapter of Alpha Sigma Alpha is dedicated to The University of West Alabama and the surrounding community. Its sisters are involved in organizations such as community service groups, resident association, and other various professional clubs. The sisters of Zeta Rho take immense pride in their philanthropy by supporting the Special Olympics, Girls on the Run, and ASA Foundation. Each year, Zeta Rho dedicates one week to DOT Days (donating our time). This week is set aside for all members to focus on service to their communities. Zeta Rho members donate their time to the national philanthropic partners and local community during this week.

From socials to community service, date parties to cheering on the Tigers, and formals to D.O.T. week, the sisters of Alpha Sigma Alpha continue to flourish and exemplify excellence.

FACTS:

NICKNAME: ALPHA SIG OR ASA

CHAPTER NAME: ZETA RHO

VALUES: GROWTH, GENEROSITY, RELATIONSHIPS, RESPONSIBILITY, BALANCE, ENJOYMENT, LEARNING, INTEGRITY

MOTTO: ASPIRE, SEEK, ATTAIN

FLOWER: ASTER, NARCISSUS

COLORS: CRIMSON, PEARL WHITE, EMERALD GREEN, GOLD

NATIONAL FOUNDING DATE: NOVEMBER 15, 1901

CHAPTER CHARTER DATE: MAY 9, 1998

NATIONAL PHILANTHROPY: SPECIAL OLYMPICS, GIRLS ON THE RUN, ASA FOUNDATION

CHAPTER PHILANTHROPY: MERIDIAN CARE LODGE

NATIONAL WEBSITE: ALPHASIGMAALPHA.ORG

INSTAGRAM: @ALPHASIGUWA

TIK TOK: @UWA.ASA

ACADEMICS:

GPA NEW MEMBER FROM HIGH SCHOOL: 2.5

GPA TRANSFER: 2.5

GPA ACTIVE MEMBER (GOOD STANDING): 2.5

EXPENSES:

NEW MEMBER FIRST SEMESTER DUES: \$278 (INCLUDES INITIATION AND JEWELRY FEE)

ACTIVE MEMBERS DUES: \$416 PER SEMESTER

*THERE MAY BE ADDITIONAL FEES SUCH AS T-SHIRTS

ALPHA SIGMA TAU

GAMMA GAMMA

Alpha Sigma Tau is a sorority that strives to enrich the lives of all women through networking skills and power they will need to excel in life. Members develop lifelong friendships whose core is the values they share with one another. All done within a community of support that will make them into a better version of themselves. Through gracious living and a beautiful spirit, the members of Alpha Sigma Tau achieve a vast amount of community impact that improves the quality of the world.

November 4, 1899 at Michigan State Normal College, also known as the teacher's college in Ypsilanti, a sorority movement was sweeping the country. Our founders: Helene M. Rice, Harriet Marx, Adriance Rice, Mayene Tracy, May Gephart, Mabel Chase, Eva O'Keefe, and Ruth Dutcher saw an opportunity for women to engage and grow together as sisters. They started the very first chapter known as the Alpha chapter, which is still thriving together. The goals they set were to instill the navigation of life for women who on their own wouldn't have it.

The colors of Alpha Sigma Tau are Emerald Green, which stands for prosperity, and Victory Gold, which stands for passion. The Victory Gold is the color of our crest, and the Emerald Green surrounds the crest. On the crest is a crown, star, book, anchor, and candle. Our national jewel is the white pearl. The national flower is the yellow rose, which represents friendship. Every two years the sisters join together at a convention, and reunite to bond over the shared purpose, "To promote the ethical, cultural, and social developments of the members."

The Gamma Gamma chapter provides business attire to all students who may need it through our on campus philanthropy known as Tiger Threads. University of West Alabama has recognized it as the Career Closet. Our national philanthropy called Dress for Success is what inspired Gamma Gamma to aid in the struggle against primarily women not having the means to present themselves adequately in the professional world. Gamma Gamma members are committed to participating in campus organizations. Currently our members have made impacts through SGA, Housing, Band, Tigerettes, Athletics, Ambassador. We value intellect and members study together, which has paid off and landed a lot of members in Honor Societies, President, and Dean's lists.

From socials to community service, date parties to cheering on the Tigers, and formals to fundraisers, the sisters of Alpha Sigma Tau continue to flourish and exemplify excellence.

FACTS:

NICKNAME: AST

CHAPTER NAME: GAMMA GAMMA

VALUES: GRACENOUSNESS, RESPECT, INTELLECT, CONNECTIONS, EXCELLENCE

MOTTO: ACTIVE, SELF- RELIANT, TRUSTWORTHY

FLOWER: YELLOW ROSE

COLORS: EMERALD, GOLD

NATIONAL FOUNDING DATE: NOVEMBER 4, 1899

CHAPTER CHARTER DATE: MAY 15, 1987

NATIONAL PHILANTHROPY: GIRLS WHO CODE, WOMEN'S WELLNESS, DRESS FOR SUCCESS

CHAPTER PHILANTHROPY: TIGER THREADS CAREER CLOSET AND GIRLS INC.

NATIONAL WEBSITE: ALPHASIGMATAU.ORG

CHAPTER WEBSITE: UWA.ALPHASIGMATAU.ORG

FACEBOOK: @UWA.AST

INSTAGRAM: @AST.UWA

ACADEMICS:

GPA NEW MEMBER: 2.5

GPA ACTIVE MEMBER: 2.5

EXPENSES:

- NEW MEMBER FEE: \$121

- INSURANCE, HEALTH AND SAFETY: \$49.50

- TECHNOLOGY FEE: \$18.70

- PANHELLENIC FEE: \$4.40

- INITIATION FEE: \$143.00

DUES PER FALL SEMESTER - \$400

DUES PER SPRING SEMESTER - \$360

PHI MU

KAPPA XI

Phi Mu Fraternity is a women's organization which provides personal and academic development, service to others, commitment to excellence and lifelong friendship through a shared tradition. The bond its sisters have does not just last four years in college, but rather a lifetime.

Phi Mu was founded in 1852 at Wesleyan College in Macon, Georgia, the first college chartered to grant degrees to women. Originally founded as the Philomathean Society, a literary club, it is the second-oldest sorority in the nation. For nearly 170 years, Phi Mu has provided social opportunities, a support network and personal enrichment resources to the nearly 200,000 women who have joined its sisterhood. Phi Mu Fraternity continually strives to provide members with the many benefits of a steadfast sisterhood, embodying its open motto, "Les Sœurs Fidéles," the Faithful Sisters. Phi Mu upholds the values of love, honor, and truth, and its creed defines what it means to be a noble woman.

The Kappa Xi chapter of Phi Mu is dedicated to the University of West Alabama and the surrounding community. Its sisters are involved in organizations such as varsity sports teams, community service groups, numerous honor societies and other various professional clubs.

The sisters of Phi Mu are #forthekids and take immense pride in their national philanthropy. Since 1986, Phi Mu has supported children's health initiatives through its corporate partnership with Children's Miracle Network Hospitals. Along with supporting Phi Mu's national philanthropy, the Kappa Xi chapter has also adopted two chapter philanthropies in honor of two sisters who left earth too soon. To keep the legacy of Bethany Joyce Harris and Libby Scott Hankins alive, the Kappa Xi chapter of Phi Mu continuously supports #BuckleUpForBeth and the Live-Like Libby, Love-Like-Libby Foundation.

From socials to community service, date parties to cheering on the Tigers, and formals to philanthropy events, the sisterhood of Phi Mu continues to flourish and exemplify excellence.

FACTS:

NICKNAME: PHI MU

CHAPTER NAME: KAPPA XI

VALUES: LOVE, HONOR, TRUTH

MOTTO: THE FAITHFUL SISTERS

FLOWER: CARNATION

COLORS: ROSE AND WHITE

NATIONAL FOUNDING DATE: MARCH 4, 1852

CHAPTER CHARTER DATE: JANUARY 11, 1969

NATIONAL PHILANTHROPY: CHILDREN'S MIRACLE NETWORK HOSPITALS

CHAPTER PHILANTHROPY: #BUCKLEUPFORBETH, LIVE LIKE LIBBY- LOVE LIKE LIBBY FOUNDATION

NATIONAL WEBSITE: PHIMU.ORG

CHAPTER WEBSITE: UWA.PHIMU.ORG

FACEBOOK: @PHIMUKAPPAXICHAP

TWITTER: @PHIMU_KAPPAXI

INSTAGRAM: @PHIMU_UWA

ACADEMICS:

GPA NEW MEMBER: 2.75

GPA ACTIVE MEMBER: 2.75

EXPENSES:

ACTIVE MEMBER MONTHLY DUES: \$85

*PROVISIONAL MEMBER FEE: \$49.50

**NATIONAL OBLIGATION: \$101

*BADGE: STARTING AT \$88

*INITIATION FEE: \$153

*HOUSING AND DECORATING FEE: \$100

**SOCIAL FEE- \$50

*INDICATES ONE TIME FEE, ** INDICATES YEARLY FEE