

**THERE'S
SOMETHING
ABOUT
THIS PLACE.**



SPRING ORIENTATION HANDBOOK



CONTENTS

3 From the President

4 Important Dates

5 New Student Checklist

6 Technology Overview

8 Connect With Us

ACADEMICS

9 Colleges & Divisions

10 Academic Programs

11 Student Services

12 1st Gen. Student

RESOURCES

13 UWA C.A.R.E.S.

14 Student Advocacy

16 Tutoring Resources

17 Barnes and Noble

MONEY MATTERS

18 Financial Aid

20 Tuition & Fees

CONNECTING TO CAMPUS

21 Student Involvement

22 Student Organizations

23 Campus Recreation

24 Student Activities

LIFE ON CAMPUS

25 Athletics

26 Living on Campus

28 Campus Dining

29 Campus Safety

FOR PARENTS

30 Get to Know Byron Thetford
Dean of Students

32 Conversations to have
with your Student

33 Note pages

35 Important Contacts

FROM THE PRESIDENT

Welcome to Orientation 2026 at the University of West Alabama!

It is with great excitement and a deep sense of responsibility that I address you today as the president of this remarkable institution. Whether you are here to begin your academic journey or to better understand what this campus has to offer, know that you are stepping into a vibrant, diverse, and inspiring environment that is committed to your growth and success.

Orientation is a time to familiarize yourself with the opportunities and resources available to you. Engage fully in the sessions, ask questions, and connect with your peers, faculty, and staff. This is your opportunity to build a foundation for the experiences and achievements that will define your time here.

UWA has a proud tradition of fostering excellence and innovation. It is a place where ideas flourish, creativity thrives, and lifelong friendships are forged. You are now part of that legacy, and your unique contributions will help shape the future of our campus community.

As we navigate this time together, I want you to know that we are here to support you every step of the way. Our dedicated faculty, staff, and administration are committed to providing the resources and guidance you need to begin this journey successfully. If you have questions or face challenges, do not hesitate to reach out; we are here to help.

Finally, I urge you to embrace this moment with courage and curiosity. Orientation is not just about learning where things are or meeting new people—it is about setting the stage for your college experience and discovering what excites and motivates you.

I look forward to meeting many of you during Orientation and to witnessing the incredible things you will accomplish during your time here. Together, let us make this beginning extraordinary and unforgettable.

Welcome to the start of an exciting new chapter in your life!

Warm regards,



Todd G. Fritch, Ph.D.

President

The University of West Alabama



IMPORTANT DATES

SPRING 2026

JAN 14	FIRST DAY OF SPRING SEMESTER
JAN 19	MARTIN LUTHER KING HOLIDAY
FEB 23	REGISTRATION FOR NEXT TERM
MAR 10	ASSESSMENT DAY
MAR 23-27	SPRING BREAK
MAY 4-7	FINAL EXAMS



**SCAN FOR FULL
ACADEMIC CALENDAR**



NEW STUDENT CHECKLIST

Welcome home, future Tigers.
We are excited to have you here at
The University of West Alabama.

Congratulations and welcome to the UWA family!

Use the new student checklist below to complete the steps before joining us on campus. If you have questions, please contact the Recruitment office at 205-652-3578 or recruitment@uwa.edu.

COMPLETE YOUR APPLICATION

- ☐ Final Transcripts
- ☐ Test Scores (if needed)
- ☐ Immunizations
- ☐ Placement Tests (if needed)

FINANCIAL AID & STUDENT ACCOUNTS

- ☐ Review and submit all financial aid information
- ☐ Review student bill in Self-Service
- ☐ Make all payments for tuition & charges

HOUSING & RESIDENCE LIFE

- ☐ Apply for Housing
- ☐ Find your roommate in MyCollegeRoomie
- ☐ Participate in room selection in your MyHousing portal
- ☐ Learn what you should and shouldn't bring with you to campus



TECHNOLOGY OVERVIEW

TIGERHUB PORTAL

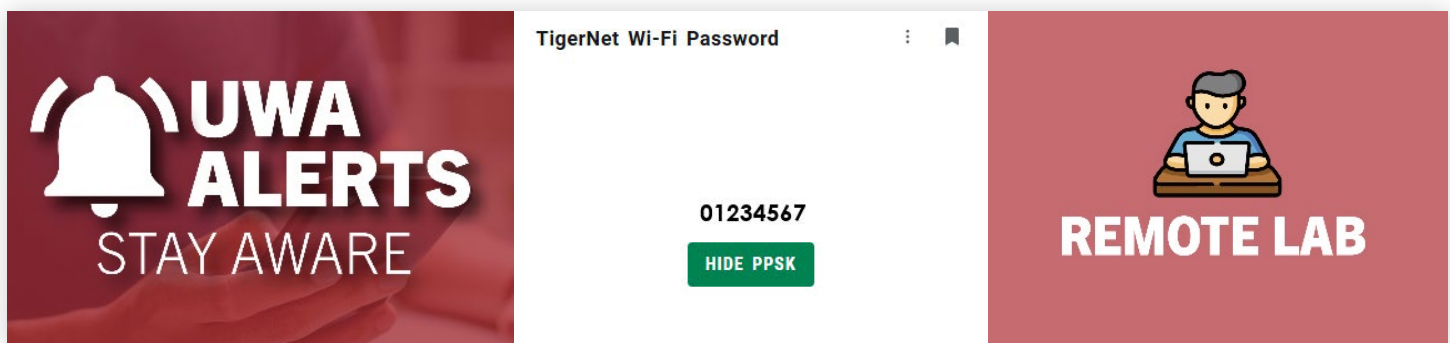
TigerHub Portal offers important services that students attending orientation can use. First, open a web browser and navigate to <https://myaccount.uwa.edu>. From here you can:

Create/Reset Your Password:

Navigate to <https://myaccount.uwa.edu/> to set up your UWA password, click “Create/Reset Your Password” on the UWA My Account page. Create or answer the security questions and enter a new password that fits within the displayed security guidelines, then click “Reset Password.” Another way to reset your password is through TigerHub. Click the main menu in the top left of TigerHub. Click on “My Account” then click on “Reset your password”

Update UWA Alerts:

UWA Alerts is UWA’s emergency notification system. By signing up, you can be contacted via phone call, text message, or email about events such as inclement weather or school closings. To sign up, click “UWA Alerts” in the TigerHub Portal, agree to the terms of service, and enter your contact information.



Retrieving your Wireless TigerNet Password (PPSK):

If you just registered for classes, you will not be able to retrieve your TigerNet wireless key for one business day. To connect to the TigerNet wireless network, you must first retrieve your TigerNet wireless key. This key is specific to each user and should not be given to others. Your network key will only work on up to five devices at once. If you give another student your confidential information to retrieve your wireless password and they use all your licenses, IT will not intervene or assign you more licenses to access our network. To retrieve your password, use another computer to access the TigerHub Portal, locate “TigerNet Wi-Fi Password”, and click “Show PPSK.” This code will allow you to connect to the campus TigerNet wireless network. If you are unable to connect, you can bring your device to Webb Hall Room 125 during business hours and we will assist. If your inability to connect is due to a hardware failure or virus installed on the computer, we will not be able to assist you any further.

DISABLING WIRELESS DEVICES

Devices that broadcast a wireless signal will significantly weaken UWA’s TigerNet wireless network, slowing or prohibiting access for all users within range. It is because of this that hotspots, wireless printers, or any other devices that can broadcast a wireless signal must have this function disabled. All devices that can broadcast a wireless signal have an option to disable this, and the option is usually found on the device’s “settings” or “network settings” menu. You can still use a personal printer by connecting to it with a standard USB cable, usually included with personal printers.

HOW TO REMOTELY SEND A PRINT JOB TO THE PHAROS PRINT SYSTEM

A new feature we have implemented with the Pharos Print System will give you the ability to email an attachment, like a Word document or Excel spreadsheet, from your UWA account to **print@uwa.edu**. When you do this from your personal laptop or smartphone, it will then be available to print from any Pharos Print System on campus. The Pharos Print System has been programmed to associate your UWA email address with your student ID number, so that only you will have access to print the items you send to Pharos.

YOUR STUDENT ID CARD

The Tiger Card, now available on your phone through **Transact eAccounts**, is used as your door key and for a variety of services provided by the University, including Dining Dollars. Dining Dollars expire after the school calendar year (Fall-Spring) and are only usable at Young Hall Cafeteria, StarBucks, Subway, and Burgers & Fries.

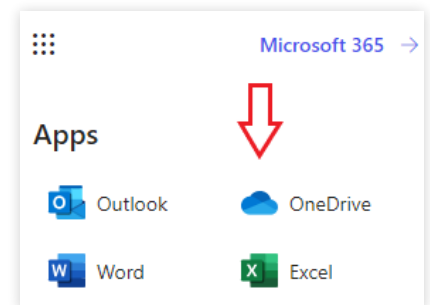
HOW TO DOWNLOAD MICROSOFT 365 FOR FREE



To download a free version of Microsoft 365, navigate to **<http://portal.office.com>** and put in your UWA email address. Once the page redirects to a login page with the UWA logo, finish the sign in process by following the prompts on screen. Once logged in, you can install Microsoft 365 Apps by clicking Install and More > Install Microsoft 365 Apps. After this downloads, follow instructions on the screen to finish installation. You can install Microsoft 365 on up to five computers with your account.

ACCESSING ONEDRIVE CLOUD STORAGE

All UWA students have access to OneDrive cloud storage along with their Microsoft 365 license. To access your OneDrive files from your personal computer, you can use OneDrive on the Web. Open a browser go to **<http://portal.office.com>** and log in with your UWA email address and password. Click on the grid icon on the top-left of the page and select OneDrive from the list. From here you can manage all your files stored in OneDrive.

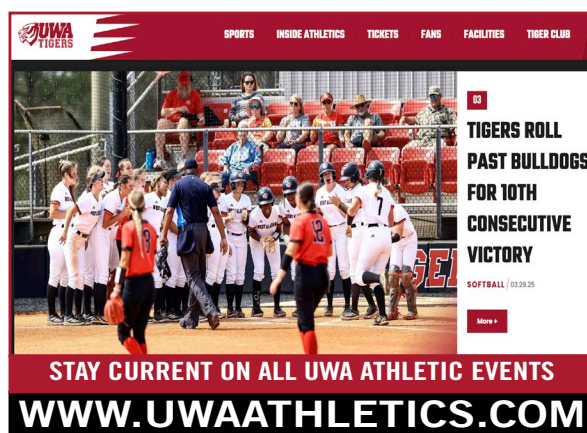


REMOTE LAB ACCESS (UWA APPS)

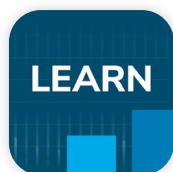
You can now access our university's lab from your personal computer. Open a web browser and go to the UWA website, click TigerHub Portal and sign in. Once you signed in, you will see a tile for "Remote Lab", click that tile, and sign in start your session. The Remote Lab should then load in your browser, giving you access to the same experience you would have from computer labs on campus.

CHECK OUT THE INFORMATION TECHNOLOGY PAGE WITHIN THE TIGERHUB PORTAL FOR THE LATEST SOFTWARE UPDATES

CONNECT WITH US



HELPFUL APPS



BLACKBOARD LEARN

Stay informed and connected with your courses. Take assignments and tests, and view grades for courses, assignments and tests.



MICROSOFT OUTLOOK

Your UWA Student Email – Official form of communication and your way to stay in touch with professors, admissions, financial aid, etc.



UWA TIGER HUB

Connects you with the systems, people, information and updates you'll need to succeed at the University of West Alabama.



TRANSACTION ACCOUNTS

This is how you access facilities, purchase meals, and enjoy campus perks, all from your phone.

SOCIAL MEDIA



FACEBOOK

@univwestalabama
@uwabound
@uwaconnect



INSTAGRAM

@univwestalabama
@uwabound
@uwaconnect



TIKTOK

@univwestalabama
@uwabound
@uwaconnect

COLLEGES & DIVISIONS

COLLEGE OF BUSINESS

The College of Business is dedicated to producing innovative and effective business professionals capable of changing their own lives and the lives of others.

Dr. William Hill | *Dean*

✉ Wallace Hall 211

COLLEGE OF EDUCATION

At the Julia Tutwiler College of Education, teaching is more than a job — it's a calling. Our graduates have been doing, with distinction, the work that matters for generations.

Dr. Cheryl Lambert | *Dean*

✉ Lyon Hall D110

COLLEGE OF LIBERAL ARTS

A degree in liberal arts is more valued in the job marketplace than ever. Whether you study the Arts, English, or Integrated Marketing Communications — you'll develop the skills and experiences you need to thrive.

Dr. Joy Cauthrin | *Chair*

✉ Wallace Hall 407

Dr. Kendrick Prewitt | *Chair*

✉ Wallace Hall 307

Mr. Greg Jones | *Chair*

✉ Wallace Hall 108

COLLEGE OF NATURAL SCIENCES & MATHEMATICS

Science is a way of thinking. Using state-of-the-art labs, research facilities, and practical workspaces, this is home to the pursuit of scientific endeavors.

Dr. Jeffery Merida | *Dean*

✉ Math and Science 118

IRA D. PRUITT COLLEGE OF NURSING

The mission of the Ira D. Pruitt College of Nursing is to provide a quality education program that prepares competent, caring, and culturally sensitive graduates who meet diverse health care needs.

Dr. Mary Hanks | *Dean*

✉ Spieth Hall 332

DIVISION OF ENGINEERING TECHNOLOGY

Have you always been interested in how things work? The Division of Engineering & Technology focuses on making engineering and technology careers accessible. Our students are prepared today for tomorrow's challenges.

Dr. Narendra Datta | *Chair*

✉ Engineering Technology 105 B



ACADEMIC PROGRAMS

COLLEGE OF BUSINESS

Accounting
Business Administration
Business Administration: Agribusiness
Business Administration: Agritourism
Business Administration: Business Information Systems
Business Administration: Entrepreneurship and Non-Profit Administration
Business Administration: Healthcare Administration
Business Administration: International Business
Business Administration: Rural Business
Finance
Management
Marketing
Marketing: Event Marketing
Marketing: Professional Sales
Marketing: Sport Marketing
Quantitative Finance & Econometrics
Technology

COLLEGE OF EDUCATION

Early Childhood Development
Early Childhood Education
Elementary Education
Collaborative Teacher/Special Education (K-6)

COLLEGE OF LIBERAL ARTS

Create Arts Enterprise
English
English: Publishing Track
English: Creative Writing Track
English: Language Arts Teacher Certification
General Social Science: Teacher Certification
History
History: Teacher Certification
Integrated Marketing Communications
Integrated Marketing Communications: Graphic Design Track
Integrated Marketing Communications: Interior Design
Integrated Marketing Communications: Sports Communication Track
Interdisciplinary Studies
Politics and Justice
Psychology
Public Safety
Sociology: Community Health Track
Sociology: Criminal Justice Track
Sociology: Traditional Track

COLLEGE OF NATURAL SCIENCES AND MATHEMATICS

Athletic Training
Biology
Biology: Teacher Certification
Cell & Molecular Biology (Medical Track)
Chemistry
Chemistry Comprehensive: Forensic Track
Chemistry Comprehensive: Pre-Pharmacy
Chemistry Comprehensive: Traditional Track
Conservation and Field Biology
Conservation and Field Biology: Forestry Dual Degree
Conservation and Field Biology: Wildlife Dual Degree
Environmental Science
Environmental Science: Conservation Enterprises Track
Exercise Science: General Exercise Science
Exercise Science: Pre-Athletic Training
Exercise Science: Pre-Chiropractic Emphasis
Exercise Science: Pre-Occupational Therapy Emphasis
Exercise Science: Pre-Optometry Emphasis
Exercise Science: Pre-Physician Assistant Emphasis
Exercise Science: Pre-Physical Therapy Emphasis
Exercise Science: Strength Training and Conditioning Emphasis
General Science: Teacher Certification
Health Sciences
Health Sciences: Athletic Training Track
Health Sciences: Occupational Therapy Track
Health Sciences: Physical Therapy Track
Health Sciences: Physicians Assistant Track
Health Sciences: Respiratory Therapy Track
Human Performance Comprehensive
Marine Biology
Mathematics
Mathematics: Actuarial Science
Mathematics: Teacher Certification
Mathematics: Computer Engineering Technology
Mathematics & Engineering Dual Degree
Physical Education P-12
Sport Management

IRA D. PRUITT COLLEGE OF NURSING

Nursing (ASN & BSN).

DIVISION OF ENGINEERING TECHNOLOGY

Computer Engineering and Technology
Electrical Engineering and Technology
Engineering Technology
Industrial Maintenance: Electrical Option
Industrial Maintenance: Welding Option
Technology
Mechanical Engineering and Technology

MINORS

Accounting
Animation
Anthropology
Art
Biology
Business Administration
Chemistry
Creative Writing
Computer Engineering Technology
Early Childhood Education
Economics
Electrical Engineering Technology
Elementary Education
Emergency Medical Services
English
Environmental Sciences
Exercise Science
Finance
General Science
History
Humanities
Journalism
Management
Marketing
Mathematics
Mechanical Engineering Technology
Physical Education
Political Science
Psychology
Public History
Social Work
Sociology
Special Education
Sport Management
Sports Psychology
Student Affairs Leadership
Technology
Theatre
Nonprofit Leadership & Philanthropy

STUDENT SERVICES

CAREER DEVELOPMENT

The UWA Office of Career Development strives to provide guidance and resources to students and alumni to support their career development and attainment of career-related goals. Career Development provides information and resources to help students engage in self-awareness, career exploration and job search preparation.

✉ Brock Hall 121
@ careers@uwa.edu

REGISTRAR'S OFFICE

The Office of the Registrar handles all information for enrolled students concerning class registration and transcripts.

✉ Wallace Hall 321
☎ 205-652-3587
@ registrar@uwa.edu
@ onlineregistrar@uwa.edu

COUNSELING SERVICES

Behavioral Health Services at UWA provides the following to those in need:

- Referrals to mental health providers, counselors, and/or therapists.
- Training and workshops centered around mental health, setting boundaries, managing social anxiety, dealing with intense emotions, and various forms of abuse.

Call University Police at 205-652-5555 if immediate assistance is needed, especially if the situation is potentially life-threatening.

You can also dial 988 to reach the

Suicide and Crisis Lifeline.

Mon – Fri 8:00 a.m. – 5:00 p.m.
✉ Foust Hall

JULIA TUTWILER LIBRARY

The Julia Tutwiler Library offers you curated information and library services to meet your academic needs. The library has numerous multidisciplinary and specialized academic databases that connect you to scholarly, peer reviewed articles; eBooks, and streaming media. In the library building you will find places for group and individual study, computer labs and printers, physical books, archives & special collections, and reference & research help. Librarians offer individualized research help consultations, online and in-person. You may borrow resources from other libraries through UWA's interlibrary loan service.

☎ 205-652-3613
@ library@uwa.edu

www.uwa.edu/julia-tutwiler-library/

Library Hours:

Sunday: 2:00 p.m. – 10:00 p.m.
Mon – Thurs: 7:30 a.m. – 10:00 p.m.
Friday: 7:30 a.m. – 5:00 p.m.
Saturday: 12:00 p.m. – 4:00 p.m.

ONE STOP

Need help accessing resources and services at UWA? When it comes to addressing your questions and concerns, the University of West Alabama has a dedicated solution for students. UWA One Stop is the go-to hub for all your questions, be it related to financial aid, billing, class registration, information technology, learning management software, student accounts, and

more. We are here to streamline problem-solving, ensuring that you can concentrate on your studies and make the most out of your college journey.

Whether you prefer to reach out by phone or connect with us online, UWA One Stop is your reliable resource for assistance with all things UWA. Your life, your future, and your education matter to us, and we are committed to making your college experience as smooth as possible.

✉ Brock Y-Hall
☎ 205-652-3800



VETERAN SUCCESS OFFICE

The UWA Veteran Success Office provides the full spectrum of individualized, relationship-centered support and advocacy for military-affiliated students enrolled on campus or online. Each military student's unique experience adds to our vision of establishing a model for leadership in the region and beyond. We facilitate the administration of educational benefits for student-veterans, their spouses, and their dependents. The path to using veteran benefits is communication. UWAVS is committed to providing a welcoming environment to ensure a successful transition to UWA and the larger regional community.

For further information or to schedule an appointment:

Sharon Rainey | *School Certifying Official*

✉ Wallace Hall 320
☎ 205-652-3930
@ va@uwa.edu

FIRST GEN. STUDENT RESOURCES

WHAT IS FIRST GEN?

A first-generation college student is one whose parent(s) did not graduate from a four-year college.

TRIO SSS SCHOLARS PROGRAM*

The TRIO SSS Scholars Program offers first-generation and income eligible students all the resources, knowledge, and support they need to achieve their academic and career goals while they are at UWA. We assist students with everything from accessing financial resources, to staying on track academically, to applying to a graduate program or for their first job. Along the way, students have access to leadership opportunities, assistance with scholarship and internship applications, and options to join in on our workshops and cultural trips.

Membership in our program is limited, so be sure to apply early!

TRI ALPHA HONOR SOCIETY

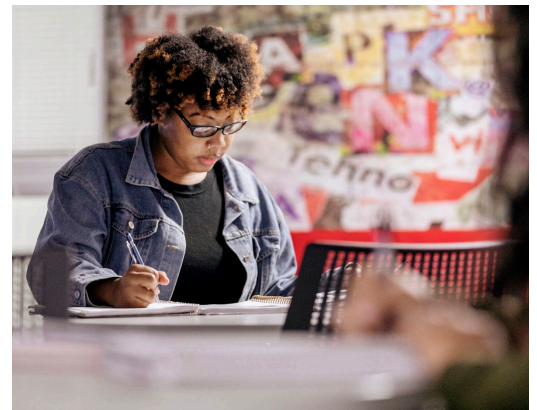
The purpose of Alpha Alpha Alpha is to recognize academic achievements in first-generation college students, create enthusiasm for scholarships, to promote leadership, and to provide support networks for first-generation students within and across college chapters. For more information, contact

Julia Traegers

@ trialpha@uwa.edu

FLi SOCIETY STUDENT ORGANIZATION

The FLi Society is a student organization for first-generation and/or low-income (FGLI) students led by SSS Scholars. The FLi Society's purpose is to offer guidance and support to FGLI students, create a sense of community on campus, and provide leadership opportunities for our members. FLi raises funds that support a number of projects including a textbook lending library, UWA's food pantry, and UWA's annual first-generation student celebration each November.



**SCAN FOR
MORE INFO**

**This program is funded by the U.S. Department of Education*

UWA C.A.R.E.S.



CARES

Center for Achievement, Retention,
and Enrichment Services

The UWA Center for Achievement, Retention, and Enrichment Services* (CARES) offers a wealth of resources to students at no cost.

UWA CARES provides students with:

- ✓ Academic Advising
- ✓ Major and Career Exploration Tutoring & Study Hall Workshops
- ✓ Printing

Academic Advising Info Sessions:

Scan the QR to sign up to be invited to join our advisors on Zoom this June and July. Chat with the CARES advisors, learn more about academics at UWA, and get all your questions answered.



Contact Us:

- ✉ Spieth Hall 200
- ☎ 205-652-3547
- @ CARESAdvisor@uwa.edu

Scan to go to the
UWA CARES Webpage



CARES is a part of the More in Four grant, funded by the
Federal Department of Education



The CARES Closet is a free resource for any on campus UWA student who needs school supplies, personal care items, and basic household supplies.

Student can also book request a tutor, assistance with textbooks, and laptop check-outs through the CARES Closet App.



RISE UP is a cohort-based support program designed to help first-year students transition smoothly into college and build a strong foundation for success.

As part of this program, students take UWA 200: Success Strategies, a course that provides the study skills, life strategies, and academic support needed to thrive in college.

Benefits of Rise Up:

- ✓ A dedicated peer-mentor for personalized support
- ✓ Opportunities to earn a scholarship
Budgeting workshops
- ✓ Career exploration programs
- ✓ The chance to become a future Rise Up mentor (paid position)

Email us to learn more!

- @ retention@uwa.edu

STUDENT ADVOCACY

The Office of Student Advocacy was created to help students and potential students solve college-related problems by providing individual attention to each issue. It is important that these problems be handled in a direct, expeditious, and friendly manner. If a student has tried without success to resolve a problem on campus, it's time to give me a call.

Role of the Student Advocate

- **LISTENING** to the needs and concerns of the student, potential student, and support system
- **EDUCATING** the students on college policies and procedures spotlight on students
- **COMMUNICATING** with the students to assist in devising a solution or strategy to the problem(s) or finding alternatives
- **GATHERING** information and making inquiries in cooperation with the student
- **REFERRING** the students to the appropriate office or person, or contacting the office or person on the student's behalf
- **FOLLOWING** up with the student to be sure the situation is resolved, the question is answered, or (s)he has made the necessary contact
- **RECOMMENDING** process or procedural improvements when necessary

How Student Advocates Help

A Student Advocate could assist with a variety of things including ADA accommodations, connection to campus resources, help with the resolution of an issue on campus, or any issue that arises and you are just not certain on who to turn to for help.

How can Student Advocacy Help?

ADA Requests/Accommodations

- Academic
- Housing
- ESA (Emotional Support Animal)
- Short-term disability/injury

Student Issues/Concerns

- Complaints (non-academic)
- Extended absence from class/campus
- Support for students with early indicators
- General help and not sure where to go

Administrative Grievances

From time-to-time students may have questions and/or concerns regarding administrative policies or operations. These questions may involve areas such as financial aid, housing, or student life. Generally, there are logical explanations for situations, and usually, most questions can be resolved in an informal manner through discussion with the individual or office involved. In instances where a student raises a question about a non-academic policy or decision (academic matters fall under the Academic Grievance policy), the affected staff member should respond constructively, explaining the situation as carefully as possible and checking to be sure that no error has been made.

Americans with Disabilities Act

One of the functions of the Office of Student Advocacy is to assist students who have a documented disability and meet the definition of a person with a disability, as defined in The Americans with Disabilities Act and Section 504 of the 1973 Rehabilitation Act. Students enrolled at the university who seek accommodations must identify with the Office of Student Advocacy by contacting the ADA Coordinator, request accommodations by completing the request for services and accommodations forms, and provide appropriate, current documentation of their disability.

<https://www.uwa.edu/american disability act>

Will Atkinson | *Director*

✉ Foust Hall
☎ 205-652-3581
@ advocacy@uwa.edu



**SCAN FOR
MORE INFO**

TUTORING RESOURCES

UWA WRITING CENTER

The UWA Writing Center offers writing assistance to students from any discipline across our campus. They strive to be a space that nurtures collaborative endeavors and values critical thinking, where writers feel welcomed as intellectuals, appreciated as individuals, and appreciated as part of the UWA community. The Writing Center's inclusive, supportive, peer-led academic environment strives to meet the writing and communication needs of all students while helping writers build the confidence and the knowledge they need to succeed in their academic and professional careers.



Jessica Sullivan

✉ Wallace Hall 301
@ writingcenter@uwa.edu

UWA MATH LAB

The UWA Mathematics Tutorial Laboratory is a place for students to get assistance studying for their math classes. Its primary function is to provide students with the opportunity to receive one-on-one help from tutors ready and able to answer questions. The University of West Alabama Math Lab offers assistance to students from any discipline across our campus.

Kim Giles | Director

✉ Math & Science 130
@ kgiles@uwa.edu

UWA C.A.R.E.S.

UWA CARES provides free tutoring to on-campus undergraduate students for most subjects. Most commonly, CARES provides tutors for math, science, English, and history courses. If a student needs tutoring in another subject, CARES will work to try to find a tutor and provide the service when possible. To request a tutor, students can complete the UWA CARES Tutorial Request form in eforms or contact Mrs. Lasandra Tolbert.

Lasandra Tolbert

✉ Spieth Hall 228
☎ 205-652-3472
@ spatrack@uwa.edu



BARNES AND NOBLE

There is nothing more important to us than the students, faculty and schools we serve.

Their commitment to learning and passion for teaching is what drives us to provide content, products and services that elevate learning to the highest level. Barnes & Noble College is on a vital mission to support students, faculty and schools, serving as a catalyst to meet the evolving needs of the education system and a new generation of students.

Our Covered Course Materials program makes getting your course materials more convenient and affordable.

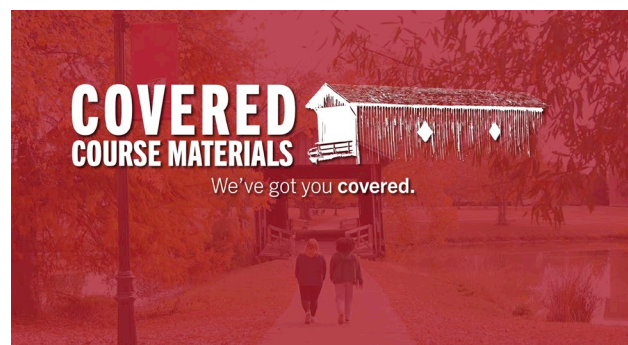
This course materials rental program provides access to all course materials without the need to shop around before the first day of class. Enrollment in this program is automatic for on-campus students at \$24 per credit hour per semester/term. Students can buy their rented textbooks at a reduced price at the end of the semester/term. UWA students participating in Covered Course Materials will:

- Receive all your course materials before the first day of class.
- Save 35-50% on the cost of course materials each term.
- Benefit from a highly personalized service.

For more information, visit www.uwa.edu/covered-course-materials/

Students are required to:

- Verify their order once they receive the Acceptance Email (30 days prior to the first day of class).
- Return their rental textbook to the bookstore before leaving campus at the end of each semester. If forgotten, the student can return textbooks by mail or to the bookstore when they return to campus.
- Pick up their course materials from the bookstore once they receive the email notification.



STUDENT FINANCIAL AID

Expecting a financial aid refund? Students can charge anything in the bookstore to their Student Financial Aid before getting their refund check using their Student ID.

You can make a purchase with your financial aid 6 days prior to the start of each semester term.

Spring Campus:	January 21, 2026
Spring Online 1:	January 21, 2026
Spring Online 2:	March 30, 2026

Prior to the beginning of a semester/term, students can place their order online and choose “In Store Pickup” and pick up their course materials when they come to campus.

You can now use Zip to purchase what you need in the UWA Bookstore. You can split your purchase and payments over time.

FINANCIAL AID

QUICK SUMMARY OF TYPES OF FINANCIAL AID

Pell Grants

Grants are gift aid that do not have to be repaid. The amount of the grant depends on the student's financial need, cost of attendance, and enrollment status.

Federal Supplemental Educational Opportunity Grants

These grants that are awarded to students with exceptional financial need. Funds for this program are limited.

Alabama Student Assistance Program

This program awards state funded grants to students with exceptional financial need, who are legal residents of Alabama. Funds are limited.

Federal Work-Study Program

A federally funded program available to qualified students who demonstrate financial need. Students are employed approximately 15 hours per week. Funds are limited.

Federal Direct Loans

Under this program, the Federal Government makes loans, through schools, directly to students. Students may be eligible for subsidized or unsubsidized loans. The student must complete entrance counseling and a promissory note.

Direct Plus Loans

Under this program parents may borrow amounts up to the cost of attendance minus any financial aid that the student receives. Unless the parent chooses to defer payment, they must begin payment within 60 days of disbursement. Parents must complete a PLUS loan application and a promissory note.

4 EASY STEPS

1 Get your Federal Student Aid

Your username and password combination serves as student's or parent's identifier to allow access to personal information in various US Department of Education systems and to complete the FAFSA application for all federal student aid. Go to www.studentaid.gov to learn more.

2 Complete your FAFSA and add UWA's School Code

Applying for federal student aid is always FREE. That's why the application is called the Free Application for Federal Student Aid. To apply, fill out your FAFSA as soon as possible in December for the following start of fall classes. Apply online at www.studentaid.gov. It's faster and easier. UWA's School code is 001024. If you need help filling out the FAFSA, you can reach out to the FAFSA Help Line @ 877-845-9883

3 Review and Correct your FAFSA

After you apply, you'll receive a submission summary that contains the information you reported on your FAFSA. Review this report carefully and make any necessary changes or corrections.

4 Submit Additional Information and Documentation

Additional information may be required to complete the FAFSA process, ten percent of all applicants are randomly selected for process of verification. The verification must be completed or you will not be eligible for state or federal aid. Inceptia will notify you by email with instructions if your selected.

FINANCIAL AID QUICK COURSE

Financial assistance helps pay for college education. It comes in three forms:

- **Grants and Scholarships:** These don't have to be repaid.
- **Loans:** Students borrow money and pay it back.
- **Work-Study:** Students take on part-time jobs through Federal Work-Study to earn money toward expenses besides tuition and room and board – such as books, supplies, transportation, etc.

Note: If you are in the military or a veteran, contact Sharon Rainey about veterans and military education benefits: 205-652-3930 or va@uwa.edu

GRANTS

Most federal, state, and institutional grants are awarded based upon the student's family's financial need. The grant amounts may vary each year. Apply each year by filling out the Free Application for Federal Student Aid (FAFSA).

SCHOLARSHIPS

UWA awards scholarships based on academic achievement and leadership abilities. To apply for an academic scholarship, students should be admitted and have submitted our scholarship application by the deadline given. Once a student declares a major, check with the academic department to find out about departmental scholarships.

There are many other sources of scholarships and other assistance beyond UWA – through local clubs, churches, and community organizations in your hometown. We encourage you to look into the possibilities and apply.

Financial Aid Office

- ✉ Webb Hall 334
- ☎ 205-652-3576
- @ financialaid@uwa.edu

LOANS

The major federal student loans include the Federal Stafford Loans (subsidized based on financial need; unsubsidized not based on financial need), and the Federal PLUS loan (credit based loan program for a dependent student's parents). Each loan varies as to the amount each year, interest rate, and guidelines. Eligibility is determined by completing the FAFSA.

On some loans, students may choose not to make payments while enrolled in college at least half-time. However, student borrowers must start repaying after leaving school or dropping below half-time enrollment status. Students may choose to pay interest only while in school on the Unsubsidized Stafford loan.

WORK STUDY AND STUDENT JOBS

One way to help offset educational expenses is for students to work part-time at a campus job while taking classes. Work study is based on the student's financial need based on the FAFSA. As a work-study student, you will typically work 10 to 15 hours per week and you can't earn more than the amount listed on your award letter. Students receive a paycheck bi-weekly, for hours worked during the previous pay period. These funds will not be available at the beginning of the semester to pay your tuition and other charges by the due date.

TIP: If you plan to work, make sure you bring either your Social Security card and/or birth certificate to campus. Students have to show one of these, along with their student ID, within their first three days of work.

TUITION & FEES*

*Tuition and Fees subject to change.

TUITION PER SEMESTER

FULL-TIME STUDENT

IN-STATE STUDENT \$325 PER HOUR

FULL-TIME IN-STATE STUDENT
AT 15 HOURS \$4,875

OUT-OF-STATE STUDENT \$650 PER HOUR

FULL-TIME OUT-OF- STATE STUDENT
AT 15 HOURS \$9,750

PART-TIME STUDENT (<12 HOURS)

IN-STATE STUDENT \$325 PER HOUR

OUT-OF-STATE STUDENT \$650 PER HOUR

FEES PER SEMESTER

STUDENTS WITH >7 HOURS

TIGER ONE FEE \$605

COURSE FEES AS APPLICABLE

COVERED COURSE MATERIALS FEES
(\$24 PER CREDIT HOUR);

STUDENTS MAY OPT OUT OF THE COVERED COURSE
MATERIALS PROGRAM

MEAL PLANS PER SEMESTER

STUDENTS LIVING ON CAMPUS WITH >7 HOURS

TIGER BLOCK MEAL PLAN \$1,309

TIGER ACCESS MEAL PLAN \$1,719

DINING DOLLARS* \$400

*STUDENTS MAY OPT IN TO RECEIVE \$600 IN
DINING DOLLARS

BILLING STATEMENT

- Available to students through Student Finance
- Students may request a billing statement from the Student Accounts Office.

ROOM PER SEMESTER

CHARGES VARY BY FACILITY

SELDEN TWIN XL BED \$2,110

SELDEN FULL BED \$2,210

HOOVER PHASE I \$3,010

HOOVER PHASE II \$3,390

GILBERT \$2,850

REED \$2,550

PATTERSON A & C \$2,550

PATTERSON B \$3,480

PAYMENT

- All charges are to be paid no later than registration day of each term
- Students who have unpaid charges will be deregistered and may have to pay a late registration fee.
- Charges incurred during a semester must be paid before a student can register for another term.

Student Accounts

✉ Webb Hall 214

☎ 205-652-3542

@ stuacct@uwa.edu

METHODS OF PAYMENT

- Cash, check, money order, or cashier's check
- VISA, MasterCard, Discover, or American Express
- Student Financial Aid
- Scholarships
- Student Loans
- Payment Plans offered through Student Finance
- Any combination above

For more information on Payment Plans:

✉ Webb Hall 214

☎ 205-652-3542

@ stuacct@uwa.edu

The UWA Student Association strives to actively represent the needs and concerns of the UWA student body by committing to excel in leadership, citizenship, and fostering unity among its students.

At UWA, there are over 60 student clubs and organizations, providing opportunities for students of every interest. Some organizations are organized to meet the interest of a few students, while others are established to fulfill a long-term role with the university.

UWA is home to 13 greek lettered social organizations. Membership in a fraternity or sorority offers students a unique opportunity to have a balanced college life with a focus on academic excellence, brotherhood/sisterhood, leadership development, service, and responsible social interaction.



The Campus Activities Board is your UWA entertainment connection. Consisting of current students, CAB is responsible for bringing student events to the UWA campus. Whether it is Bingo for Bucks, Serendipity, Springfest, a comedy show, and more! We are your entertainment connection!



STUDENT ORGANIZATIONS

ACADEMIC, DEPARTMENTAL & PROFESSIONAL

Accounting Club
Alabama Student Rural Health Association
Association of Nursing Students
DECA
Enactus
Exercise Science Club
F.I.R.S.T.: Future Innovators and Researchers in
STEM Teaching
Finance Club
Minority Business Student Association
Natural History Collections Conservation Club
Physical Education Club
Sports Medicine Club
UWA Rotaract

SPECIAL INTEREST

Active Minds
Black Activities Panel Selection (B.A.P.S.)
Black Student Union
Chinese Student Association
Equality Alliance
Film Club
International Student Association
International Club
Latin Student Alliance
Outdoor Recreation Conservation
Association (ORCA)
Residence Housing Association
SSS FLi Society

HONOR

Alpha Alpha Alpha
Alpha Chi
Alpha Delta Nu
Alpha Psi Omega
Blue Key Honor Society
Cardinal Key National Honor Society
Iota Tau Alpha
Kappa Delta Pi
Lambda Pi Eta
Omicron Delta Kappa

Order of Omega
Phi Eta Sigma
Phi Kappa Phi
Phi Alpha Theta
Pinnacle
Psi Chi
Sigma Tau Delta

SERVICE

Alpha Phi Omega
Campus Activities Board
Student Ambassadors
Student Government Association
The Sunflower Tea Club

RELIGIOUS

Baptist Campus Ministries (BCM)
Delight Ministries
Fellowship of Christian Athletes
Life 180
St. Francis of Assisi Campus Ministry
The Awakening
The Risen
The Wesley

CLUB SPORTS

Bass Fishing Club

SOCIAL FRATERNITIES & SORORITIES

Alpha Phi Alpha Fraternity Inc.
Alpha Kappa Alpha Sorority Inc.
Alpha Sigma Alpha
Alpha Sigma Tau
Delta Chi
Delta Sigma Theta Sorority Inc.
Kappa Alpha Psi Fraternity Inc.
Omega Psi Phi Fraternity Inc.
Phi Beta Sigma Fraternity Inc.
Phi Mu
Sigma Gamma Rho Sorority Inc.
Sigma Pi
Zeta Phi Beta Sorority Inc.

CAMPUS RECREATION

Your education includes so much more than going to class! At UWA, there are **countless opportunities** to be a part of something great – from service organizations to Greek life, from honor societies to tons of clubs and organizations. The **more involved** you become, the richer and **more rewarding** your college experience.

UWA FITNESS CENTER – HUGHES GYM

When we think about education, we think of the classroom. But a healthy body is every bit as important to anyone reaching his or her full potential. The UWA Fitness Center has everything you need, from free weights to fitness classes, to strengthen your body. The Fitness Center is available to students every weekday from 6:00 a.m. to 9:00 p.m., Saturday from 10:00 a.m. to 7:00 p.m., and Sunday from 12:00 p.m. to 7:00 p.m. It is located in Hughes Gym. All a student needs to enter is their Tiger ID card. The Fitness Center also has job opportunities for lifeguards, desk staff, group exercise instructors, and swim lesson instructors.

fitness@uwa.edu

INTRAMURAL SPORTS

Get out there and have some fun! Intramural Sports provide students, faculty, and staff the opportunity for competition and fun in a variety of team sports. You can form a team and join an intramural league with weekly matches. Or, if you don't want to commit to a season of play, you can opt to participate in our tournaments. In any case, intramurals are an opportunity to get active, have fun and meet some like-minded friends. Want to play, but can't find a team? Talk to us. We'll help you get connected. intramurals@uwa.edu

REC CENTER – HUGHES GYM

The UWA Rec Center is the perfect place for a pick-up basketball game or intramural volleyball game. The Student Recreation Center is open 7 days a week with various hours.

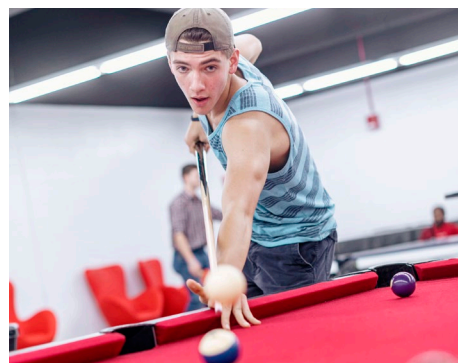
OUTDOOR RECREATION

The Outdoor Recreation program offers gear/equipment rental, a beach located at Lake LU, rafting & ski trips, and more for students, faculty, staff and community members to enjoy. We strive to provide opportunities to foster a greater appreciation for the outdoors. outdoorrec@uwa.edu

UNIVERSITY CINEMA

UWA-owned, UWA-operated and staffed by UWA students, the University cinema is a 90-seat public theater open to anyone. Open 5 days a week, UWA students are given 1 free movie a week. Ticket sales and concessions begin 30 minutes prior to showtime. No Cash Accepted

cinema@uwa.edu



STUDENT ACTIVITIES

UWA CHEERLEADING

The UWA Cheerleaders are committed to representing the University of West Alabama and are active in appearances for the university and the Livingston community.

HOMECOMING WEEK

It's the most fun week of the Fall! From Spirit Week challenges, to our student talent show Serendipity, show your Tiger Pride and have a lot of fun while doing so. Enjoy a hunt for the Key to Victory, a free firework show, or the homecoming bonfire, pep rally, or student party. There is something for everyone.

SPRINGFEST WEEK

Need a break during the Spring? Springfest week is the biggest event of the semester! Packed full of free events to enjoy, this week culminates with a huge carnival style event on the Lyon Quad.



CONNECT WITH US

Campus Recreation and Student Activities

Troy Maddox | *Director*

✉ Hughes 111
☎ 205-652-3693
@ tmaddox@uwa.edu



FACEBOOK

@UWACampusRec
@UniversityCinema1
@UWACAB



TIKTOK

@UWACampusRec
@UWACAB



INSTAGRAM

@UWACampusRec
@UWACinema
@uwacab

ATHLETICS

The University of West Alabama is a full member of the National Collegiate Athletic Association (NCAA), Division II, The Gulf South Conference, and the National Intercollegiate Rodeo Association.

The University fields intercollegiate varsity teams for women in cross country, volleyball, basketball, softball, soccer, rodeo, tennis, and track. The varsity sports for men are football, basketball, baseball, cross country, soccer, rodeo, tennis, and track.

STEPS TO DOWNLOAD GAME TICKETS

1. **DOWNLOAD** the **HOMETOWN FAN APP**
(available in the App Store and Google Play)
2. **ENTER** your cell phone number for verification
3. **ENABLE** location services
4. **SEARCH** for **THE UNIVERSITY OF WEST ALABAMA**
5. **CLICK** on the **HEART** to make **UWA** your favorite
6. **CLICK** on the **GAME** you want to attend
7. **SELECT** "Have Pass Code" and enter the 1st seven digits of your student ID starting with zero
8. **ENTER** the **NUMBER OF TICKETS** under the **STUDENT/FACULTY TICKETS**
9. **ENTER** contact information
10. **HIT SUBMIT**
11. You now have your ticket(s) to the game
12. **STORE** ticket(s) on the app or add them to your **APPLE WALLET** or **GOOGLE PAY**



LIVING ON CAMPUS

The University of West Alabama is committed to a student's total educational experience. A significant part of that experience is residence hall living and getting involved outside the classroom.

Various national studies have shown that living on campus for the first year and participating in academic and social activities makes a substantial difference in the student's college experience. Living on campus has tangible perks as well:

- Proximity to academic buildings allows students to walk to class.
- There are no budgetary surprises since all utilities are included in the rent.
- Staff members are available 24 hours a day.
- Maintenance issues are easy to report and quickly resolved.
- There's easy access to campus activities, athletic events, the fitness center, and other campus resources.
- It's a diverse community where students will interact with peers from different backgrounds and cultures.

FRESHMAN HOUSING

Living on campus is a major part of the total college experience, so all new freshman are required to live on campus their first year at UWA. The residence halls at the University of West Alabama provide a convenient location to your classes and the many campus services available to you. Students living on campus tend to:

- Participate in campus life
- Attain a higher grade point average
- Have more contact with faculty
- Develop friendships that last a lifetime

Students seeking an exemption to the housing requirement must complete the Freshman Housing Exemption Form. More information concerning exemptions is available at www.uwa.edu/housing.

MyHOUSING

UWA's MyHousing portal will have timely messages regarding policies and procedures, including upcoming deadlines, potential issues, and more.

In addition, you can update your information, check your housing assignment and dining plan, submit maintenance requests and your RCR, and find many online housing forms. The MyHousing portal can be found online at <http://myhousing.uwa.edu/>.



RESIDENCE HALL STAFF

The most visible member of the Housing staff is your Resident Assistant (RA). An RA is a full-time student who has been trained to help you and other residents learn about the University and on-campus housing. In addition to helping you adjust to college life, your RA plans a variety of activities throughout the year. If you have a question about UWA, your residence hall, or you just need someone to talk to, your RA is the person to see.

Your Hall Director (HD) is responsible for the day-to-day management of your residence hall and supervises the RAs assigned to your building. Your HD is available to assist you with issues that cannot be resolved by your RA.

ROOMMATES

Living with someone requires a balance of mutual respect, cooperation, and consideration. The best way to create this atmosphere is through proactive communication. It's the essential foundation for successful roommate relationships. While it can be great when roommates are also friends, the main goals are for you to live together peacefully and respect one another. Ultimately, that's what makes a true roommate relationship work.

Discuss and set expectations early, even before moving in, and continue those conversations throughout the year. If tension or a disagreement occurs, talk with your roommate before it becomes a major conflict. If

talking with your roommate doesn't solve the problem, your RA can help with either informal conversations or a formal roommate mediation.

RESIDENCE HALLS

The University of West Alabama has five residence halls for undergraduate students, all of which are conveniently located near classes and campus services.

- **Gilbert Hall** houses all new freshmen and transfer students who have earned less than 24 semester credits, with limited space for sophomores and above. This hall is equipped with private bathrooms in each room, study rooms and lounges on each floor, and a large lobby and lounge, retail dining, and a laundry room on the first floor.
- **Hoover Apartments** houses sophomores and above and has two phases – Phase I has two double bedrooms per apartment and Phase II has four single bedrooms per apartment. There is a full kitchen and two bathrooms in each apartment.
- **Patterson Hall** has two options available for sophomores and above, both of which feature a full kitchen and a bathroom within each unit. Rooms in Patterson A and C features separate sleeping areas, while each Patterson B unit has two single bedrooms and a living room area.
- **Reed Hall** features a kitchenette with a compact refrigerator and a stove-top and each room has its own bathroom. Reed houses sophomores and above.

- **Selden Hall** features large single rooms on single gender wings with community bathrooms with private stalls. There is a large lounge and laundry room on the 1st floor.

VISITATION HOURS

In order to insure a degree of privacy for residents and maintain a secure environment, the residence halls and apartments on campus have a visitation schedule that limits visits by guests. A guest is defined as anyone (regardless of gender) who is not assigned to the specific room or apartment. Guests must be escorted at all times by a resident of the building they are visiting and are only permitted during the following times:

Gilbert Hall

Sunday – Thursday: 10:00 a.m. until 12 Midnight
Friday and Saturday: 10:00 a.m. until 2:00 a.m.

Hoover, Patterson, Reed, and Selden Halls

Daily, 10:00 a.m. – 2:00 a.m.

RENTER'S INSURANCE

UWA does not require renter's insurance, but it is strongly encouraged. The University assumes no liability for personal property damage, loss or theft, all of which can be covered by renter's insurance. Students may opt in to a renter's insurance policy through GradGuard when they apply for on-campus housing, or you can contact GradGuard directly at www.gradguard.com.

CAMPUS DINING

UWA operates various dining facilities on campus which serve well-balanced meals in a casual atmosphere. You won't go hungry! Our all you care to eat cafeteria stays busy, and offers everything from healthy options to savory treats. Don't forget to enjoy fried chicken Wednesday!

MEAL PLANS

All first-year freshmen are required to have the Tiger Access Meal Plan. The Tiger Block Meal Plan (or larger) is required of all other residents.

TIGER ACCESS MEAL PLAN

Students on the Tiger Access meal plan have unlimited access to the CAF during its hours of operation, seven days a week. Come in for lunch, come back later for a mid-afternoon snack, stop by for a soft drink, come in for an early supper and then come back for dessert or an evening snack.

TIGER BLOCK MEAL PLAN

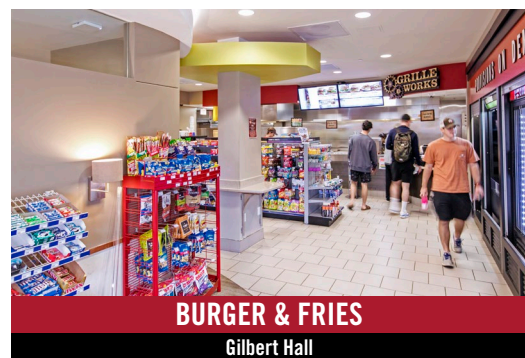
This meal plan is geared towards students who enjoy doing their own cooking. By selecting this plan, students can still get together with friends at the CAF a few times each week. All upperclassmen are assigned to this plan unless they select the Tiger Access meal plan.

COMMUTER PLANS

Commuters are offered a select group of meal plans specifically tailored with flexibility in mind. All non-resident plans are offered in blocks of 25 or 50 meals that can be used at any time.

DINING DOLLARS

During the Fall and Spring semesters, students taking seven (7) or more on campus credit hours automatically receive Dining Dollars (\$400.00). Students can opt in to receive \$600 in Dining Dollars. Dining Dollars are a debit-like account, accessed using the Tiger Card. Dining Dollars can only be used at Young Cafeteria, Starbucks, Subway and Burger & Fries. Any unused Dining Dollars are swept at the end of the Spring semester, so make sure you spend them!



CAMPUS SAFETY

UWA CAMPUS POLICE

UWA Campus police exist to serve all people within our jurisdiction with respect, fairness, and compassion. They are committed to the prevention of crime, the protection of life, and property; the preservation of peace, order, and safety; and the safeguarding of constitutional guarantees. UWA PD consists of police, security guards, and dispatchers. Officers have full arrest powers as any other officer in the state as well as investigative services. They provide a full-service police force 24 hours a day, seven days a week. Other services offered by UWA PD:



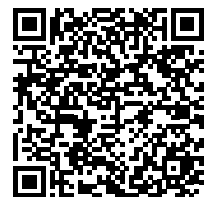
- **Student Night Time Auxiliary Patrol (SNAP):** Free campus wide transportation system used to safely escort students, faculty, and staff. Operated Sunday – Thursday from 6:00 p.m. – 11:00 p.m. (except in severe weather conditions).
- **Security Camera System:** Cameras are located through-out campus to help in the deterrence of crime. Cameras are monitored by dispatch 24 hours a day.
- **Code Blue Phones:** Located through-out campus, code blue phones are a direct link to UWA PD and are monitored 24 hours a day, 7 days a week and provide an extra sense of security.
- **Educational Programming:** To meet the needs of our campus community, we provide crime prevention and education presentations and trainings.
- **Other:** Car unlocks, car jumps, fingerprinting, etc.

University Police — (205) 652-5555

Campus Police Tip Hotline — (205) 652-3819

UWA TRAFFIC RULES & REGULATIONS

All students who have a car on campus must register their vehicle with the University Police Department through an online form. Parking decals are \$15.00 a year for resident students and \$25.00 a year for commuter students. Bicycles must also be registered. Although there is no registration fee for bicycles, students will be given a decal and valuable information that will help in the unfortunate event that the bicycle is stolen. To view more information on vehicle registration, decals, parking areas, violations and fees, ticket information, traffic accidents, and student responsibility, please scan the QR code.



UWA EMERGENCY PREPAREDNESS

The University of West Alabama has partnered with Rave Mobile Safety to provide UWA Alerts, a state-of-the-art emergency notification system. This system will allow you to receive timely notifications should an emergency situation affect the UWA area. You can receive alerts via email, text messaging, land-line and/or cell phone. This system is voluntary, although we strongly encourage everyone to sign up so that you can be notified in case of emergency. Standard charges for incoming calls and text messages apply. *(Please check with your provider if you have questions concerning those charges).*

To log into the UWA Alerts system, please scan the QR code or visit <http://www.uwa.edu/uwaalerts>. If prompted, search for “West Alabama.”



GET TO KNOW BYRON THETFORD DEAN OF STUDENTS

The Dean of Students Office is a central resource for students, staff, faculty, and families. We assist our university community in navigating academic, personal, and social challenges through support, advocacy, and accountability.

HOW A DEAN OF STUDENTS CAN HELP.

- Provide “problem-solving” services for students that help them address concerns either through direct services offered through the Dean of Students Office or by referral to an appropriate department on campus.
- Provide a resource to talk to about getting more involved on campus.
- Assist in personal or family emergencies that impact a student’s education at the university.
- Assist students to find answers to questions surrounding various academic and non-academic concerns and to help navigate UWA policies and procedures.
- Serve as the point person in the student complaint process that is available so that the concerns and complaints of students are addressed fairly and resolved promptly.
- Advocate for victims in situations including but not limited to violence, harassment, and sexual assault.
- Oversee of the Student Conduct process.

WHEN SHOULD I CALL THE DEAN OF STUDENT’S OFFICE?

Put simply if you’re concerned about anything outside the classroom that can have an impact on your experience as a college student, the Dean of Students can be a great ally.

If you aren’t sure if the Dean of Students is the right place to go with a question, with a request, or just

for more information, stop in any way and err on the safe side. If nothing else, we can save you the time of having to run around campus and wait in lines trying to figure out where you should go.

Given that life sometimes just happens while you’re in school (e.g., loved ones passing, unexpected illnesses, or other unfortunate situations), it’s always good to know everything the Dean of Students can do for you before you run into trouble.



WHAT AREAS IS THE DEAN OF STUDENTS RESPONSIBLE FOR?

- Amazon Hub Locker
- Behavioral & Health Services
- Career Services
- Campus Recreation
- Fraternities & Sororities
- Health Services
- Housing & Residence Life
- Parent Services
- Student Activities
- Student Advocacy
- Student Conduct
- Student Government
- Student Involvement & Communication
- Student Mail
- Title IX
- University Cinema

STUDENT CONDUCT

The Code of Student Conduct governs the conduct of students and organizations in all behavioral matters.

STUDENT COMPLAINT RESOLUTIONS

The University seeks to resolve student complaints in a fair and expeditious manner.

TITLE IX

Title IX is a federal law that prohibits discrimination on the basis of sex in any federally funded education program or activity.

AMAZON HUB LOCKER

The UWA Community also has access to Amazon Hub Locker, a fully automated, secure and convenient delivery solution for customers to pick up their Amazon packages at no additional cost. Using a Locker is easy and secure – after shopping on Amazon, customers proceed to checkout and select an Amazon Hub Locker available in our zip code (35470) as their delivery location. Once a package is ready for pickup, customers receive an e-mail with a barcode and a unique 6-digit code that they'll use to remove the package from the designated slot.

UWA STUDENT MAIL

UWA students may obtain a Post Office Box number for \$5.00 per semester. Student Mail Services is currently located on the first floor of Webb Hall and is open Monday through Friday, 8:00 a.m. to 5:00 p.m.

To receive mail or packages, students must have a registered PO Box number. Students with a registered PO Box may pick up FedEx and UPS packages from Webb Hall, as drivers are instructed to deliver packages to this location.

All mail and packages should be addressed as follows:

UWA Box (Student's Mailbox Number)
1 College Drive
Livingston, AL 35470

UWA HEALTH SERVICES

University Medical Center offers direct, basic health care for UWA undergraduate students, faculty and staff. Students may go to the clinic on a "walk-in" basis or may make an appointment by calling (205) 652-7001.

Students with musculoskeletal and orthopedic injuries may use the services provided by the UWA Athletic Training and Sports Medicine Center in Homer Field House.

Hours of Operation: 8:30 a.m. – 5:00 p.m.

Byron Thetford | *Dean/Interim of VP Student Affairs*

✉ Foust Hall
☎ 205-652-3435
@ bthetford@uwa.edu

CONVERSATIONS TO HAVE WITH YOUR STUDENT

COMMUNICATIONS PLAN

Discuss with your student how often you want to call, text or FaceTime. It is important to stay connected, but also be understanding of their new demands.

GRADE EXPECTATIONS

Discuss early and often your expectations regarding grades. Many scholarships require students to maintain a certain GPA. Discuss what grades are required to keep that GPA, particularly if they don't do as well as expected.

If you want to see your student's grades at the end of each semester, discuss this with your student and remind them often of your expectations for them and the agreements you have made.

FINANCES

Discuss the finances of paying for college. Your student needs to understand the value of their education and what expectations you might have for them to assist in covering costs, including books, meals, and spending money.

If your student has a scholarship and is unable to maintain the required GPA, it is important to discuss with students who would be responsible for filling in the financial gap.

SELF-MANAGEMENT

Discuss with your student the day-to-day activities that they will need to manage on their own like laundry, preparing or managing meals, paying bills and straightening up before things get too messy. Students will have more freedom in college and will have to learn to manage themselves in the new environment.

GRIT AND RESILIENCY

College is filled with great times, but students will also encounter challenging times. Whether it is a bad grade on an assignment, an argument with a roommate or new friend or a brush off from romantic interest, students need to be able to stick with things when they are hard. Help your student to understand that these things might happen and help them to identify coping mechanisms.

WHEN TO ASK FOR HELP

Discuss with your student that it is ok to ask for help. College is different than high school and your student will be challenged in new ways. It is important for them to be open to the help that is available, like Counseling Services, CARES, the Career Center, and their advisors and faculty members. We are all here to help your student and want to see them succeed!



[illegible]

[illegible]

IMPORTANT CONTACTS

Admissions

✉ Brock Hall 100
☎ 205-652-5531
@ admissions@uwa.edu
FAX 205-652-3881

Barnes and Noble

✉ Engineering Technology
☎ 205-652-3447

Campus Dining

✉ Young Hall
☎ 205-652-3643

Career Development

MRS. GENA ROBBINS
Director of Career Development
✉ Brock Hall 121
☎ 205-652-5545
@ careers@uwa.edu

College of Business

✉ Wallace Hall 211
☎ 205-652-3471

College of Education

✉ Lyon Hall D
☎ 205-652-3865

College of Liberal Arts

✉ Wallace Hall 405
☎ 205-652-3457

College of Natural Sciences & Mathematics

✉ Math and Science 118
☎ 205-652-3414

Dean of Students

MR. BYRON THETFORD
Dean of Students/Interim VP of Student Affairs
✉ Foust Hall
☎ 205-652-3435
@ bthetford@uwa.edu

MR. TROY MADDOX
Director of Campus Recreation

✉ Hughes 111
☎ 205-652-3693
@ tmaddox@uwa.edu

Division of Engineering Technology

✉ Engineering Technology 105
☎ 205-652-5474

Financial Aid

✉ Webb Hall 334
☎ 205-652-3576
@ financialaid@uwa.edu
FAX 205-652-3847

Housing

✉ Gilbert Hall
☎ 205-652-3686
@ housing@uwa.edu

Ira D. Pruitt College of Nursing

✉ Spieth Hall 334
☎ 205-652-3517

International Admissions

✉ International Programs House
☎ 205-652-5523

Information Technology

✉ Webb Hall 125
☎ 205-652-3565

Julia Tutwiler Library

☎ 205-652-3613
@ library@uwa.edu

One Stop

✉ Brock Y-Hall
☎ 205-652-3800
@ onestop@uwa.edu

Recruitment

✉ Land Hall
☎ 205-652-3578
@ recruitment@uwa.edu

Registrar's Office

✉ Webb Hall 320
☎ 205-652-3587
@ registrar@uwa.edu
FAX 205-652-3522

School of Health Sciences and Human Performance

✉ Math and Science 217
☎ 205-652-3508

Student Accounts

✉ Webb Hall 214
☎ 205-652-3542

Student Advocacy

MR. WILL ATKINSON
*Director of Student Advocacy/
ADA Coordinator*
✉ Foust Hall
☎ 205-652-3581
@ advocacy@uwa.edu

Student Support Services & TRIO Programs

MS. ANDREA FARQUHAR
Director
✉ Speith Hall 229
☎ 205-652-3628
@ afarquhar@uwa.edu

University Police

✉ Craiger House
☎ 205-652-3602

UWA Athletics

✉ Pruitt Hall
☎ 205-652-3784
@ pdew@uwa.edu

UWA Band

✉ Foust Hall
☎ 205-652-5475
@ band@uwa.edu



- | | | |
|--|------------------------------------|--|
| 1 Math and Science Building/
UWA Auditorium | 17 Choctaw Tavern | 34 Reed Hall |
| 2 Stickney Hall | 18 Callaway Schoolhouse | 35 UWA Welcome Center, Land Hall |
| 3 Sisk Hall | 19 Spence-Moon House | 36 Vaughan Tennis Complex |
| 4 McConnell Guest House | 20 Patterson Apartments | 37 Student Union Building (SUB) |
| 5 Tutwiler Library / Starbucks | 21 Gilbert Hall / Burgers + Fries | 38 Hunt Annex |
| 6 Hughes Gym | 22 Wallace Hall/Bridges Auditorium | 39 Engineering Technology Building |
| 7 Lyon Hall | 23 Campus School | 40 Hoover Apartments |
| 8 Pruitt Hall | 24 Craiger House (UWA Police) | 41 Wesley Foundation |
| 9 Homer Field House | 25 Track & Soccer Complex | 42 Softball Complex |
| 10 Tiger Stadium, Campora | 26 Chapel Complex | 43 Intramural Complex |
| 11 Athletic Complex | 27 Seiden Hall | 44 Tatt Baseball Field |
| 12 Young Hall Cafeteria | 28 Spieth Hall | 45 Cross Country Clubhouse |
| 13 Webb Hall | 29 Truelove Complex | 46 Lake LU / Nature Trails |
| 14 Bell Conference Center | 30 International House | 47 Hines-Spree Rodeo Complex |
| 15 Brock Hall | 31 Moon Hall | 48 West Alabama Center for
Conservation and Agriculture |
| 16 President's Home | 32 Campbell Environmental Center | 49 UWA Amphitheater |



MAPS & DIRECTIONS